

SNAPSHOT OF **UM-DEARBORN** 2019



9,468 students

7,185 Undergraduate, 2,191 Graduate and 92 Doctoral



2,186 degrees granted

774 Master's, 1,402 Bachelor's and 10 Doctorate

Undergraduate Students

Enrollment by College

2,963

COLLEGE OF ARTS,
SCIENCES, & LETTERS

2,212

COLLEGE OF ENGINEERING
& COMPUTER SCIENCE

109% increase since 2010

1,255

COLLEGE OF BUSINESS

580

COLLEGE OF EDUCATION,
HEALTH, & HUMAN SERVICES

175 UNDESIGNATED

WHO DO WE SERVE?

+Dearborn serves Michigan

+ approx. 72% of undergrads.
categorized as Non-Traditional

+think more broadly about
diversity, acknowledging the role of
the regional campuses, & what
equity means in terms of resources
& educational opportunities.



94% are Michigan residents representing **47** counties



38%

are first-generation college students

27%

students of color



43%

are Pell eligible



75%

work while earning their degree*



56%

work at least 16 hours per week*



44%

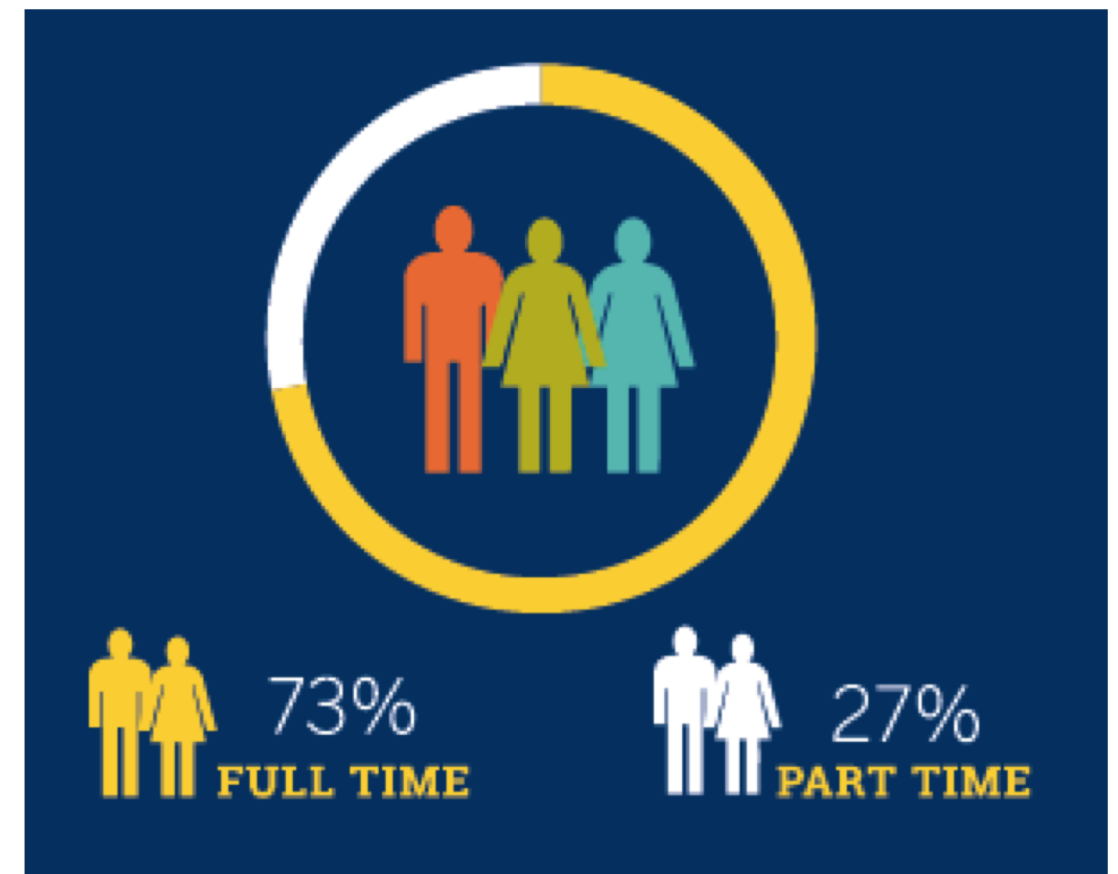
have dependent care responsibilities*

STUDENT CHALLENGES



- + Michigan Transfer Agreement - growth but also a challenge
- + 6 year completion rate - key problem; in part, this is due to 1) part-time students 2) non-traditional students.
- + What do we need to do to aid these students to complete their degrees?

(Foundations program, Office of Student Success, etc.)



Dearborn is an engine for social & economic advancement.

94% of our students come from Michigan; 91% remain in Michigan post-graduation & continue to contribute to our economy and the growth of this state.

91%

of students who accepted employment
in 2017 stay in Michigan following
graduation**

4th highest

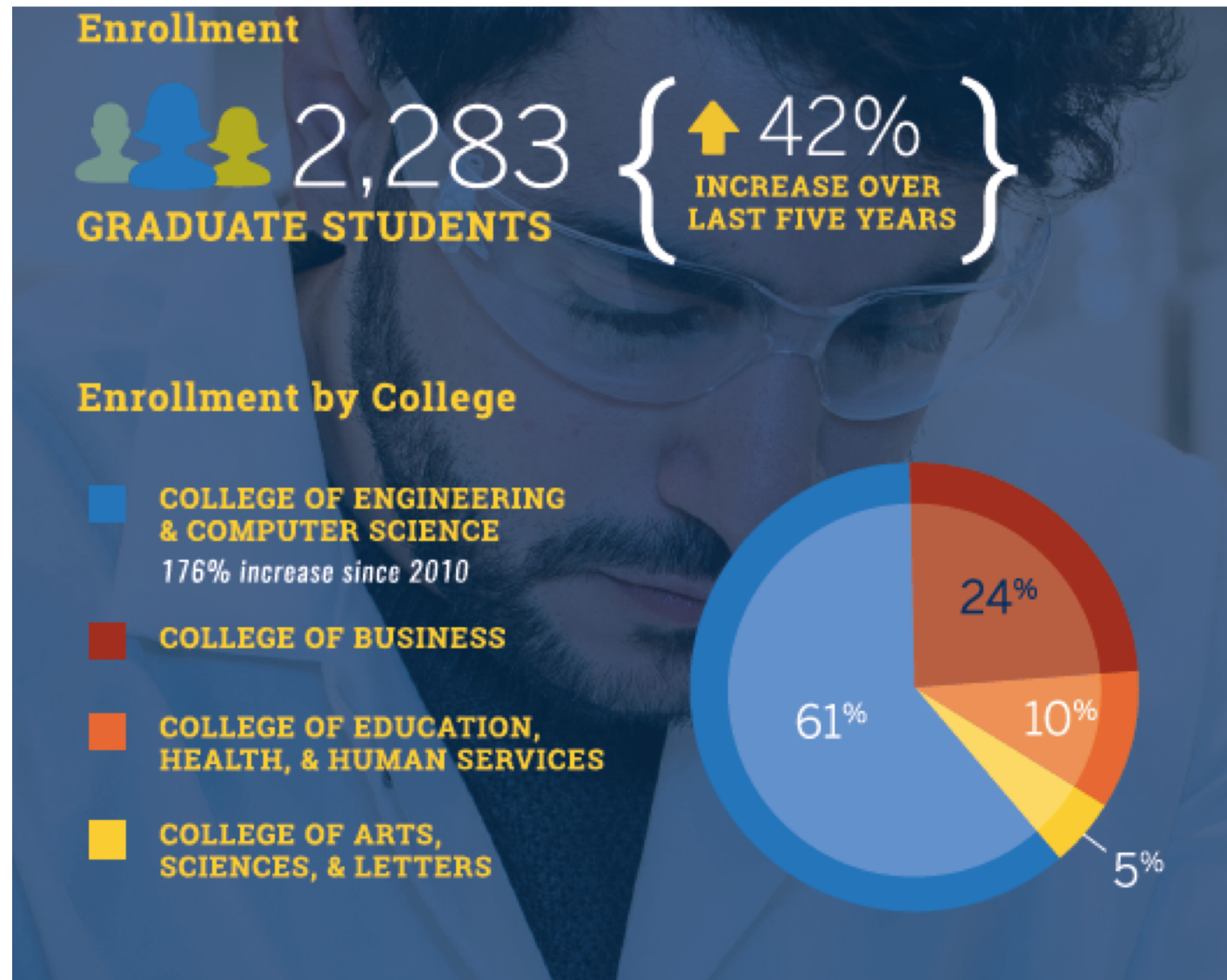
average starting salary, among 15
Michigan public universities, nearly
\$3000 above the state average.



Key Challenge: Decreasing Enrollments

- Declining Michigan population from which we draw 94% of our students (unlike roughly 48% for undergrad. for Ann Arbor's campus)
- CASL down 3% in terms enrollment this year at the undergraduate level; this has meant sudden restructuring of staff, faculty and departments (e.g. English)

OPPORTUNITY FOR GROWTH - GRADUATE PROGRAMS, ADD ON CERTIFICATES, ONLINE OPTIONS



Graduate Programs, Post-Undergraduate Certificates & Online classes - Key Areas of Growth

+Growing demand for online courses by non-traditional students

+ CASL 20% by 2020 to increase overall enrollments

+English is moving to allow for its major to be completed both online and in-person

CHALLENGES:

+Deciding what graduate degrees and certificates to develop

+Ensuring we don't duplicate programs offered by other institutions in Michigan

Info. and statistic from:

Facts & Figures: <https://umdearborn.edu/about/facts-figures>

2019 University Snapshot:

<https://drive.google.com/file/d/13dLOowgq8a4iWQntl92FZQs1q2NcWAjf/view>